

SMD Terminal Strips with Push-Buttons

Pin Spacing 4 mm

2060 Series



- SMD terminal strips with CAGE CLAMP®S connection and push-buttons
- Direct push-in of solid conductors
- Push button for connection of stranded conductors, and for removal of all wire types
- A total height of only 4.5mm helps minimize shadowing in LED applications
- Packaged in tape-and-reel for automated assembly
- Large flat area for easy pick-n-place
- Wiring ports with balcony design – creates "lead-in" for ease of wiring, even at a slight angle

Technical data:

Pin Spacing	1 Pole			2 - 3 Pole		
	4 mm 0.157 in			4 mm 0.157 in		
Rating per	IEC/EN 60664-1			IEC/EN 60664-1		
Overvoltage category	III	III	II	III	III	II
Pollution degree	3	2	2	3	2	2
Rated voltage	63 V	160 V	320 V	63 V	160 V	320 V
Rated surge voltage	2.5 kV	2.5 kV	2.5 kV	2.5 kV	2.5 kV	2.5 kV
Nominal current	9 A	9 A	9 A	9 A	9 A	9 A
Approvals per	UL 1977			UL 1977		
Rated voltage	600 V			250 V		
Nominal current UL	9 A			9 A		

Conductor data:

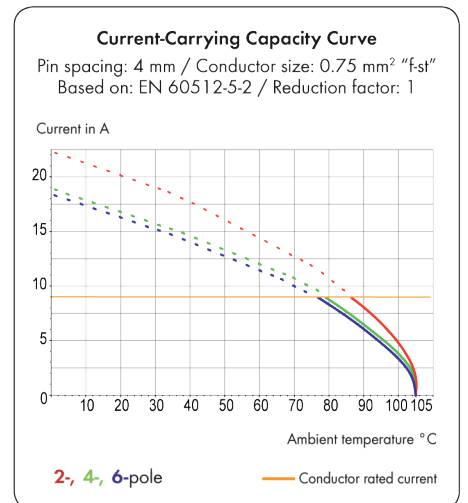
Connection technology	CAGE CLAMP®S
Conductor size: solid	0.20 - 0.75 mm ²
Conductor size: fine-stranded	0.20 - 0.75 mm ²
AWG	24 - 18
Strip length	6 - 7 mm / 0.24 - 0.28 in
Conductor entry angle	0° to PCB

Material data:

Material group	I
Insulating material	Glass fiber-reinforced polyphthalamide (PPA-GF)
Temperature stability	-35°C to +105°C
Flammability rating per UL 94	V0
Contact plating	tin-plated

Approvals are available online at: www.wago.com

For more technical information, see Full Line Catalog, Volume 2, Section 11

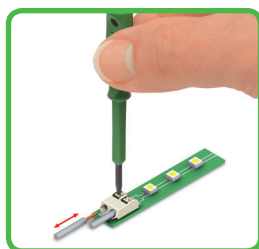


2060 Series accessories: Volume 2/Page:

Operating tools (233-335)	491
---------------------------	-----



Inserting solid conductors via push-in termination.



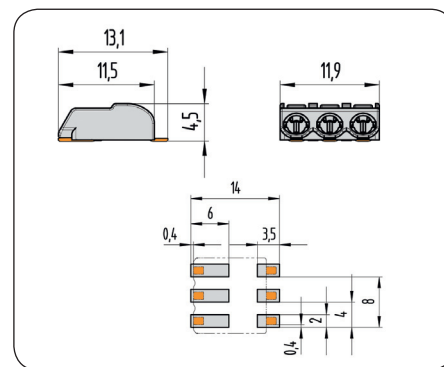
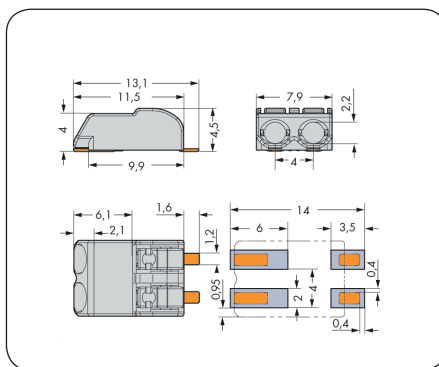
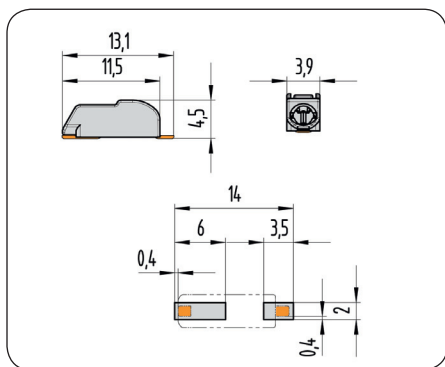
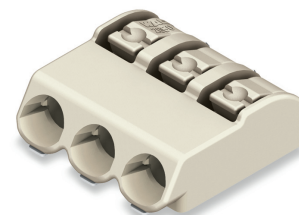
Inserting/removing fine-stranded conductors by lightly pressing on push-button (e.g., using a 233-335 operating tool or a ball point pen).



SMD Terminal Strips with Push-Buttons

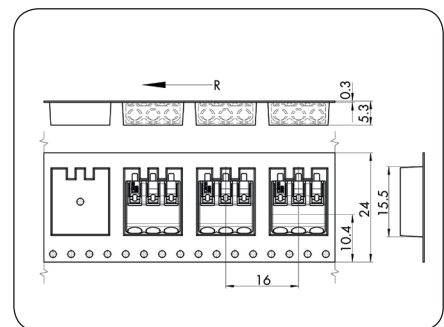
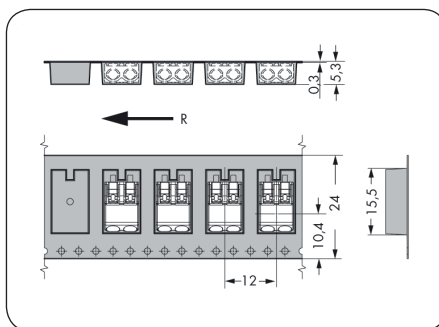
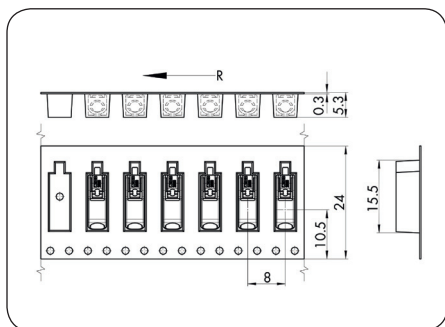
2060 Series

Pin spacing 4 mm / 0.157 in		Pin spacing 4 mm / 0.157 in		Pin spacing 4 mm / 0.157 in	
0.2 - 0.75 mm ²	AWG 24 - 18	0.2 - 0.75 mm ²	AWG 24 - 18	0.2 - 0.75 mm ²	AWG 24 - 18
160 V/2.5 kV/2 9 A	600 V/9 A	160 V/2.5 kV/2 9 A	250 V/9 A	160 V/2.5 kV/2 9 A	250 V/9 A



Pole No.	Item No.	Pack Unit/ Pieces per Reel	Pole No.	Item No.	Pack Unit/ Pieces per Reel	Pole No.	Item No.	Pack Unit/ Pieces per Reel
SMD terminal strip with push-buttons in tape-and-reel packaging, light gray*			SMD terminal strip with push-buttons in tape-and-reel packaging, light gray*			SMD terminal strip with push-buttons in tape-and-reel packaging, light gray*		
1	2060-401/998-404	1500	2	2060-402/998-404	1000	3	2060-403/998-404	750
Reel diameter: 330 mm			Reel diameter: 330 mm			Reel diameter: 330 mm		

*Depending on reflow soldering temperatures and times, color deviations may occur for light gray connectors. These deviations will have no impact on functionality.



R = Feed Direction