



**Steel carrier rail; 15 x 5.5 mm; 1 mm thick; 2 m long; slotted;  
according to EN 60715**

Item No.: 210-111



Steel carrier rail; 15 x 5.5 mm; 1 mm thick; 2 m long; slotted; according to EN 60715

### Marking

RoHS ✓  
Compliant

### Business data

|                      |               |
|----------------------|---------------|
| Supplier             | WAGO          |
| Item no.             | 210-111       |
| GTIN / EAN           | 4017332272247 |
| Content              | 1             |
| Order amount         | 1             |
| Customer item number |               |

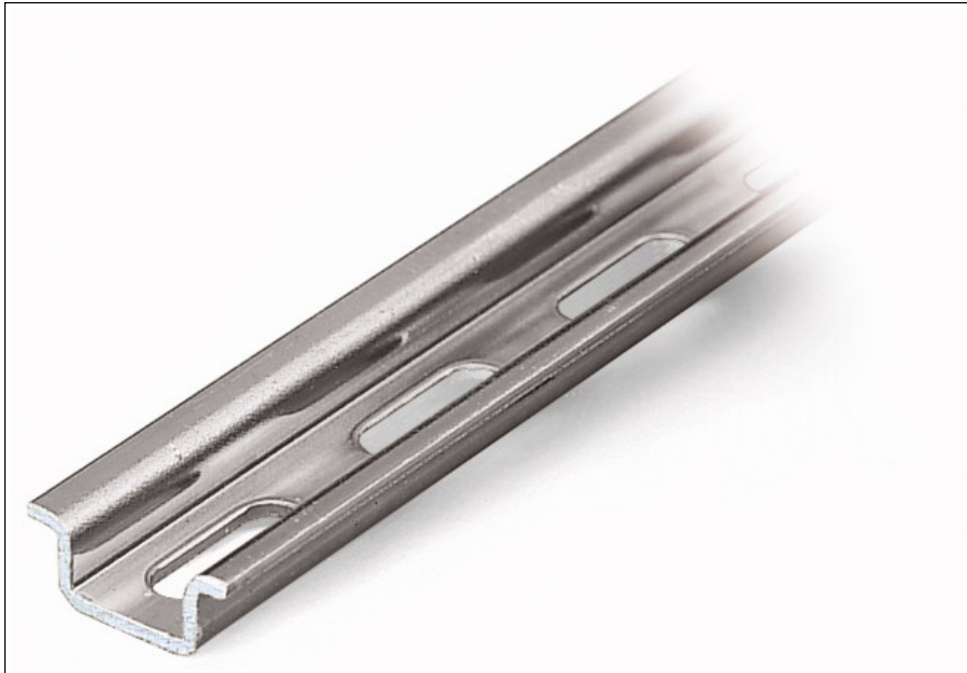
### Notes

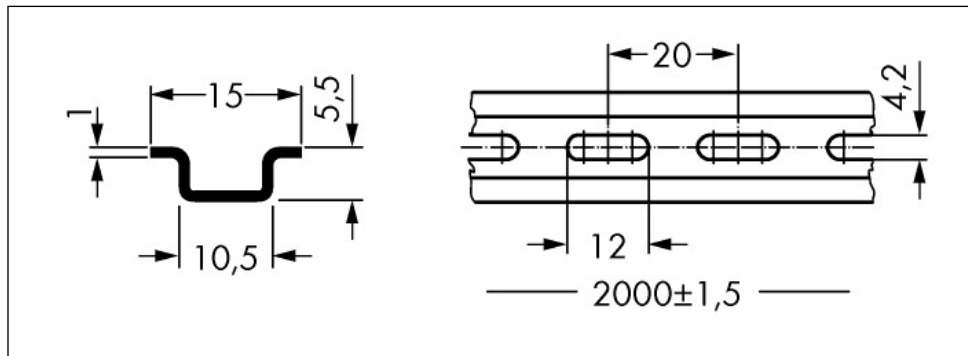
### Technical data

#### Miscellaneous

|                  |                              |
|------------------|------------------------------|
| Color            | bluish, tinned, chromed, CR3 |
| Weight [g]       | 285 [g]                      |
| Width            | 2000 mm / 78.74 Inch         |
| Height           | 0.22 mm / 5.5 Inch           |
| Depth            | 15 mm / 0.591 Inch           |
| Type of mounting | DIN-15 rail                  |

Images & drawings





## Address

WAGO Kontakttechnik GmbH & Co. KG

Hansastr. 27

32423 Minden

Telefon: 0571/887-0

Fax: 0571/887-169

<http://www.wago.com>

© WAGO Kontakttechnik GmbH & Co. KG

Technische Änderungen und Irrtümer vorbehalten.